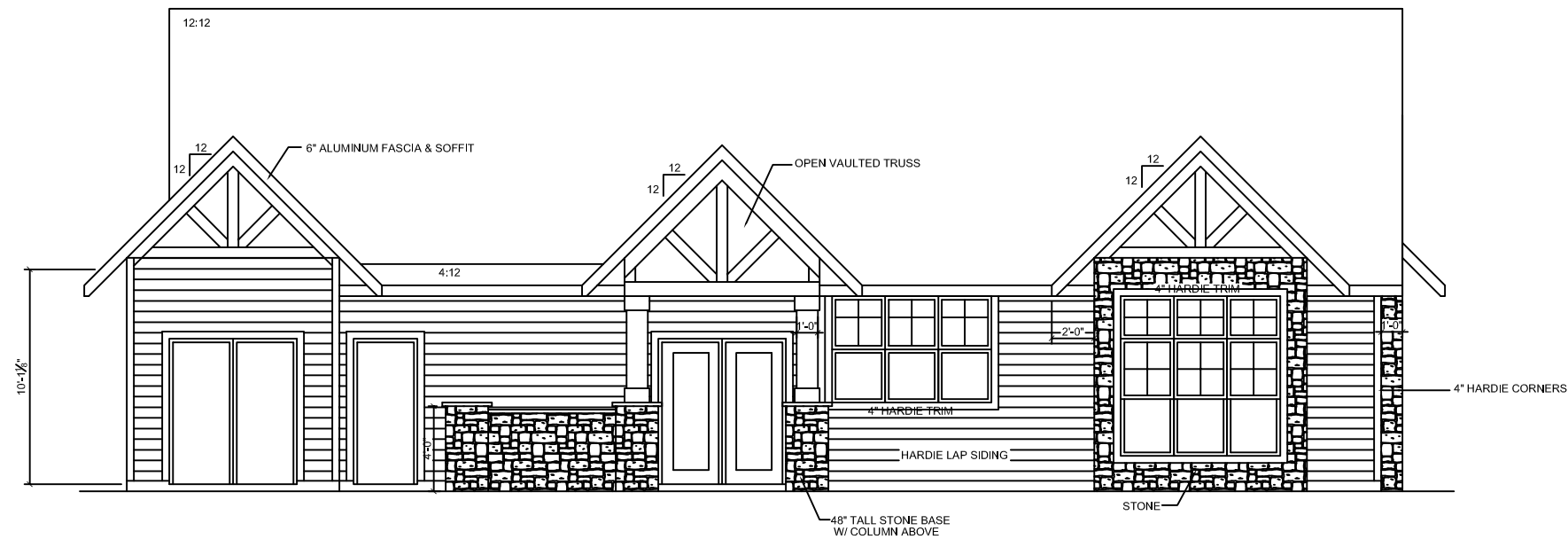


GONYEA HOMES

6102 OLSON MEMORIAL HWY.
GOLDEN VALLEY, MN 55422
OFFICE: 763-432-4500
FAX: 763-432-4501
BUILDER LICENSE #2459

REVISION RECORD

1	8-27-10
---	---------



FRONT ELEVATION

SCALE: 1/4" = 1'-0"

FACING POOL

© 2010 GONYEA HOMES

SPRING MEADOW POOL HOUSE

PROJECT

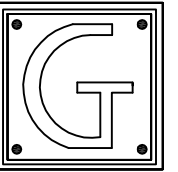
FOUNDATION	-
FINISHED SQ. FT.	-
BASEMENT	-
FIRST	-
SECOND	-
TOTAL	-

PROJ. NO.

GH0117

SHEET

1 OF 6



GONYEA HOMES

6102 OLSON MEMORIAL HWY.
GOLDEN VALLEY, MN 55422
OFFICE: 763-432-4500
FAX: 763-432-4501
BUILDER LICENSE #2459

REVISION RECORD

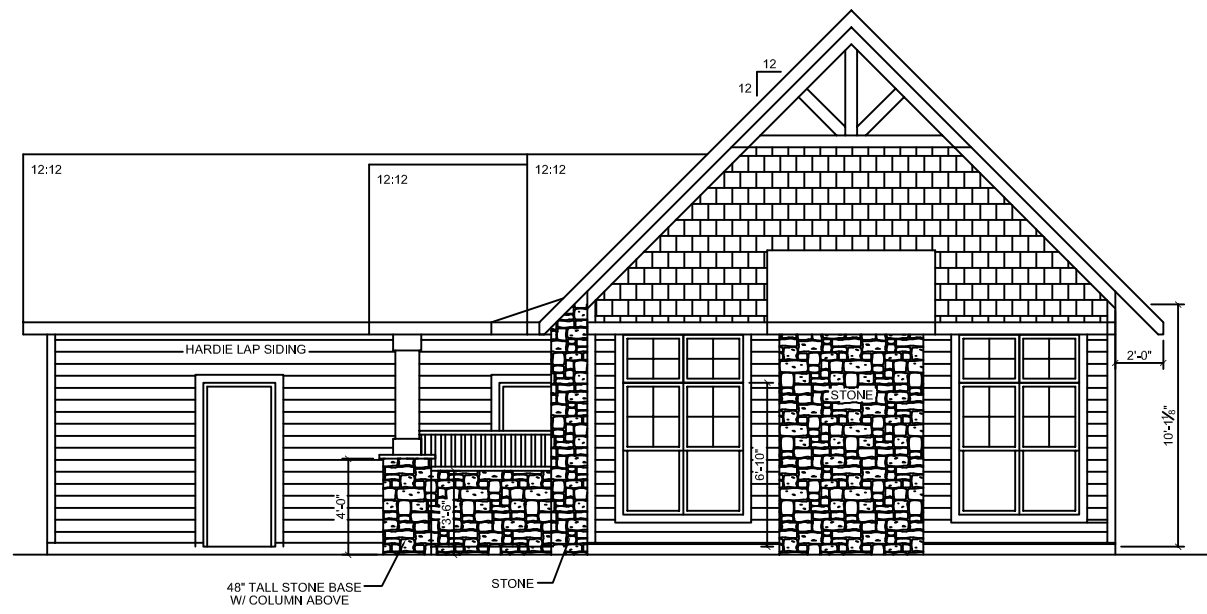
1	8-27-10
---	---------

SPRING MEADOW POOL HOUSE

© 2010 GONYEA HOMES

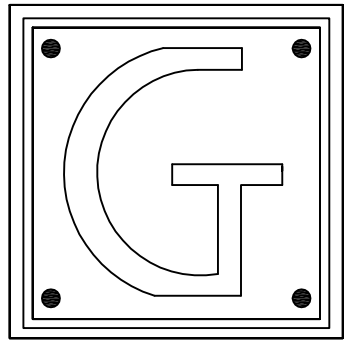
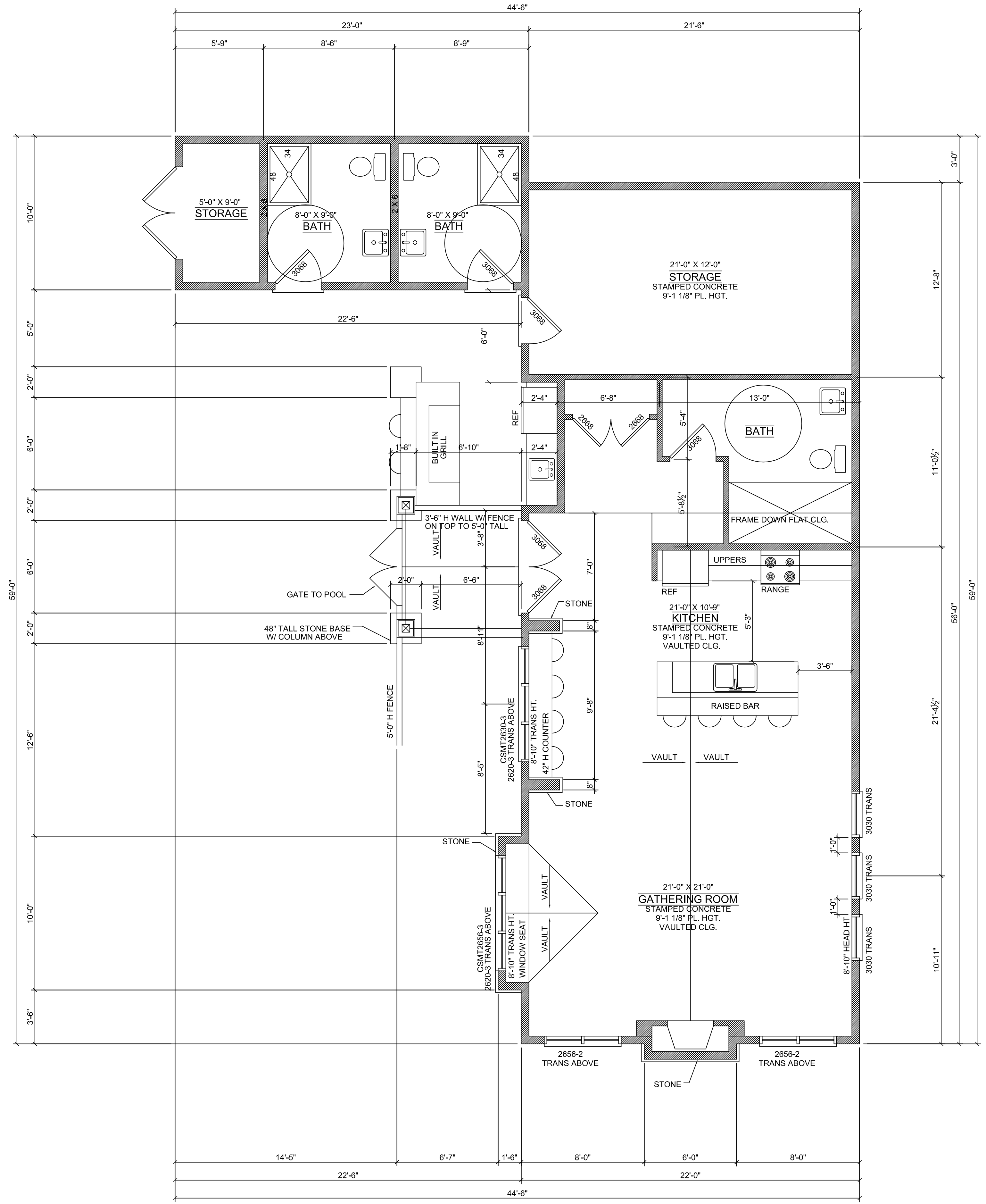
NOTE:
INSTALL TWO - MEMBRANE TAR
PAPER BACKING UNDER ALL ROCK,
STONE, AND STUCCO PRODUCTS

NOTE:
TYVEK AND TAR PAPER
EXTERIOR IN PROPER FORM



RIGHT ELEVATION
SCALE: 1/4" = 1'-0"
FACING STREET

PROJECT	
FOUNDATION	-
FINISHED SQ. FT.	-
BASEMENT	-
FIRST	-
SECOND	-
TOTAL	-
PROJ. NO.	
GH0117	
SHEET	
1	OF 6



GONYEA HOMES

6102 OLSON MEMORIAL HWY.
 GOLDEN VALLEY, MN 55422
 OFFICE: 763-432-4500
 FAX: 763-432-4501
 BUILDER LICENSE #2459

REVISION RECORD	
1	8-27-10

© 2010 GONYEA HOMES

SPRING MEADOW POOL HOUSE

PROJECT	
FOUNDATION	-
FINISHED SQ. FT.	-
BASEMENT	-
FIRST	-
SECOND	-
TOTAL	-
PROJ. NO.	
GH0117	
SHEET	
2 OF 6	